



Great Ideas for Family Leaders

Dear Family Leaders,

Whether you are the executive director, a program director, a parent peer support provider or a family liaison in a state agency or a provider organization, we invite you to join us on January 28, 2016 at 3:00 pm ET for the launch of a new Learning Community for Family Leaders. The Learning Community will connect you with other family leaders across the country working in similar settings. Through the Learning Community you will develop a national network of colleagues and also be able to share resources and learn from each other. Check out the article below for registration details.

Looking forward to connecting with you on January 28th.

*Jane Walker
Executive Director
FREDLA*

CHECK OUT FREDLA'S NEW WEBSITE: www.fredla.org

Where were you on January 12, 2016? We hope you were clicking through sections of FREDLA's new website that was launched that day. The new website offers visitors a comprehensive resource bank, an online training platform where family leaders and parent support providers can receive professional development, and in the near future, a National Data Collection project where family organizations throughout the country will be able to enter specific data to create a national data pool. If you have not visited the website, we encourage you to do so at www.fredla.org and let us know what you think.

FREDLA is grateful to Gary M. Blau, Ph.D., Chief, Child, Adolescent and Family Branch, Center for Mental Health Services SAMHSA and to Jim Wotring at Georgetown University's Center for Child and Human Development for providing the funding to build the website and online training platform.

Disclaimer: The website was supported by Award Number 5 UR1 SM059944-05 from the Substance Abuse and Mental Health Services Administration. The content is solely the responsibility of FREDLA and does not necessarily reflect the official views of the Substance Abuse and Mental Health Services Administration.

LEARNING COMMUNITY FOR FAMILY LEADERS

The Family-Run Executive Director Leadership Association (FREDLA) invites family leaders connected to SAMHSA funded System of Care sites AND non-funded sites and family-run organizations to join us on **January 28, 2016 at 3:00 pm ET** for the launch of a new Learning Community for Family Leaders.

Every day family leaders are faced with a variety of challenges as they implement, expand and sustain family voice and leadership at the local, state and national level. To support family leaders in these tasks, the Learning Community will offer peer-driven technical assistance and support.

The Learning Community for Family Leaders is funded by the National Training and Technical Assistance Center for Child, Youth and Family Mental Health (NTTAC), operated by the National Technical Assistance Network for Children's Behavioral Health (TA Network), funded by the Substance Abuse and Mental Health Services Administration (SAMHSA), Center for Mental Health Services, Child, Adolescent and Family Branch. FREDLA is a core partner in The National Technical Assistance Network for Children's Behavioral Health.



Don't miss this opportunity to connect with other family leaders throughout the country for peer-led, field-based support. Download the Learning Community flyer and plan to join us on January 28th!

<http://files.ctctcdn.com/57c33206301/260f477c-d135-496a-8087-ff2e0191bb5f.pdf>

To register for The Learning Community for Family Leaders, contact Malisa Pearson, FREDLA Project Coordinator, at mpearson@fredla.org or 517-281-7036.

PROVIDE INPUT ON EVERY STUDENT SUCCEEDS ACT (ESSA) BY JANUARY 21, 2016

The Every Student Succeeds Act (ESSA) was signed by President Obama on December 10, 2015, and represents good news for our nation's schools. This bipartisan measure re-authorizes the 50-year-old Elementary and Secondary Education Act (ESEA), the nation's national education law and longstanding commitment to equal opportunity for all students.

The previous version of the law, the No Child Left Behind (NCLB) Act, was enacted in 2002. As a part of this Act, on page 215, there is language about the authorization of Statewide Family Engagement Centers and on page 67-69 there is language about parent and family engagement provisions to be coordinated by the Statewide Family Engagement Centers (SFEC's).

Family leaders and family organizations have an important role to play in shaping who will be allowed to serve as a Statewide Family Engagement Center and what the parent and family engagement provisions should include. Feedback can be made to the Federal Register made **no later than January 21, 2016** at: <https://www.federalregister.gov/articles/2015/12/22/2015-32178/implementing-programs-under-title-i-of-the-elementary-and-secondary-education-act>

OPPORTUNITY FOR FAMILY/PARENT PEER SUPPORT PROVIDER VOICE

Public Comment on SAMHSA's National Registry of Evidence-Based Programs and Practices Ends Friday, January 29, 2016

SAMHSA's Center for Behavioral Health Statistics and Quality invites feedback for the launch of a new endeavor at the National Registry of Evidence-based Programs and Practices (NREPP). In addition to reviewing programs received during the open submission process, NREPP will conduct independent

literature reviews to add programs with strong evidence bases to the registry. SAMHSA welcomes comments from community organizations; clinicians; practitioners; advocates; researchers; city, county, and state agencies; and all other stakeholders. Your feedback will help NREPP identify and prioritize important practices and programs to the mental health and substance abuse prevention and treatment field.

Participate in Research on Peer Support

The University of Detroit Mercy is seeking volunteers to participate in a research study to better understand the work experiences of peer support specialists. Peer support specialists who are currently employed in a mental health agency or organization that delivers mental health services are invited to participate in the study. Click here to access the online survey:

<https://www.surveymonkey.com/r/UDMpeersupportstudy>.



Contact Dr. Kristen Abraham abrahakm@udmercy.edu with questions.

CONFERENCES/LEARNING OPPORTUNITIES

10th Annual National Peer Support Conference: Collaboration for Unity

August 26 & 27, 2016

Philadelphia, PA

To see more details about the conference, click here: <http://inaops.org/2016-annual-conference>

Call for Proposals

The International Association of Peer Supporters (iNAPS) is seeking proposals from presenters for its 10th Annual National Peer Support Conference. **Collaboration for Unity** is the theme of this year's conference. **To submit a proposal**, fill out the online application by **February 15, 2016**:

https://www.surveymonkey.com/r/2016_inaps_cfp1

Canada National Conference on Peer Support

April 27-29, 2016

Toronto, Ontario - Canada

For more details about the conference and to register, click here: <http://ncps-canada.com/>

Shared Decision Making Workshops

The Agency for Healthcare Research and Quality's (AHRQ) SHARE Approach is a five-step process aimed at increasing the use of evidence in shared decision making between health care providers and patients. The SHARE Approach Workshop is an accredited one-day train-the-trainer workshop to support health care providers who seek to use patient-centered outcomes research findings in shared decision making.

AHRQ has scheduled a number of free SHARE Approach train-the-trainer workshops on shared decision making. Open training locations and dates include:

- Galveston, TX - January 27, 2016

- Seattle, WA - February 2, 2016
- Seattle/Tacoma, WA - February 4, 2016
- Mineola, NY (Long Island) - March 7, 2016
- Charlotte NC - March 29, 2016
- Savannah, GA - March 31, 2016
- Orlando, FL - April 22, 2016
- Fairfield, CA - June 1, 2016

RESOURCES

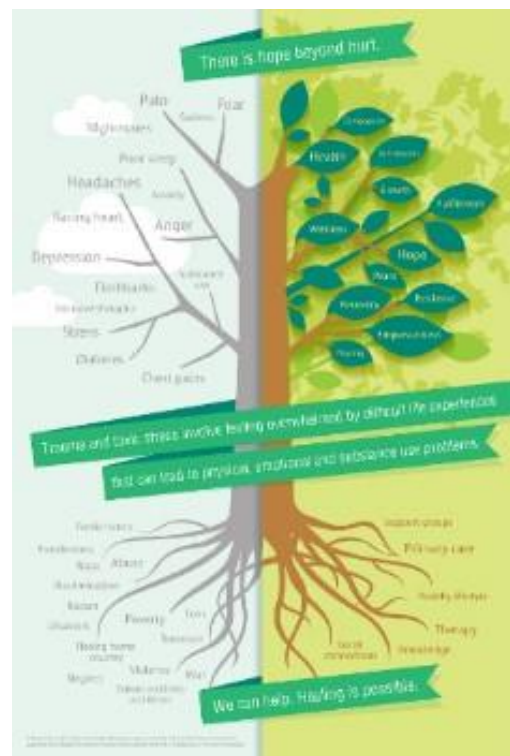
NIMH Offers Free Publications on Mental Health and Substance Use Disorders

The National Institute of Mental Health (NIMH) offers booklets, brochures, fact sheets and pamphlets on Bipolar Disorder, Attention Deficit Disorder, Anxiety and many other diagnosis. Order online at <https://infocenter.nimh.nih.gov/nimh/home> or by phone at 1-866-615-6464 (TTY 1-866-415-8051)

Trauma Poster

The National Council for Behavioral Health and Kaiser Permanente's Trauma-informed Primary Care Initiative developed a [poster](#) to help spark conversations about trauma and/or toxic stress.

The tree is a graphic representation of "hope beyond hurt" and a reminder that "healing is possible." You can [download the poster](#) and share it in any format you like-on social media, on your website, as a flyer, via email, etc. You can also print copies at a local printer or through an online printing service like Vistaprint (www.vistaprint.com).



JOIN FREDLA!

Are you a member of the Family-Run Executive Director Leadership Association (FREDLA) yet? If not, join NOW! Visit FREDLA's website at www.fredla.org and download the membership form. Don't delay - become a member today and join a growing group of family leaders committed to the leadership development and organizational capacity of Family-Run Organizations!

Thanks for reading Great Ideas for Family Leaders!

Don't forget to send us your Great Ideas - they are always welcome!

Send to Malisa Pearson, Project Coordinator

mpearson@fredla.org

FREDLA is a core partner of the National Training and Technical Assistance Center for Child, Youth and Family Mental Health (NTTAC), operated by the National Technical Assistance Network for Children's Behavioral Health (TA Network), funded by the Substance Abuse and Mental Health Services Administration (SAMHSA), Center for Mental Health Services, Child, Adolescent and Family Branch.